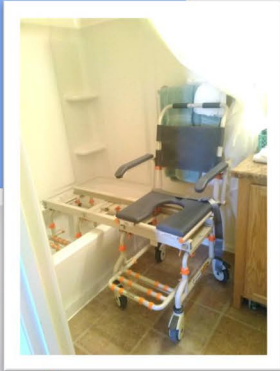


# Remodeling vs Equipment Installation

## What's the best solution?

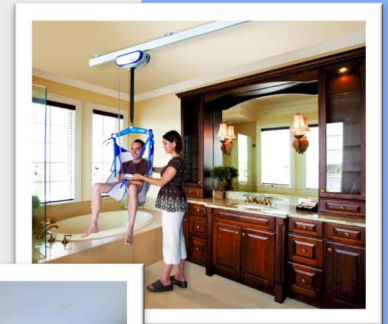
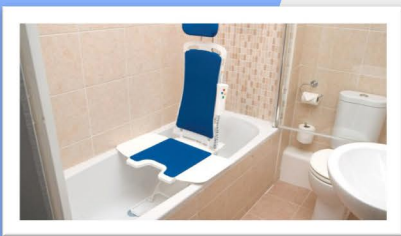
*Tub Buddy & Shower Buddy: Transfer chair that rolls over toilets & slides over shower and bathtub barriers*



*When making a home accessible, our team helps clients explore construction-based remodeling projects as well as equipment that can be installed to overcome barriers*

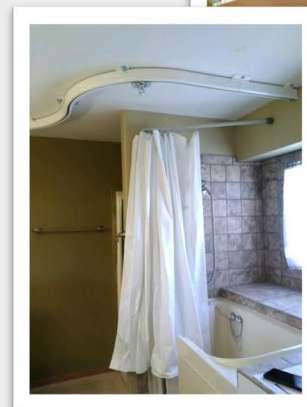
**Equipment is installed quickly, is typically less expensive than construction, and can be moved to another location**

*Hydraulic bath lifts are a great substitution for a walk-in tub*

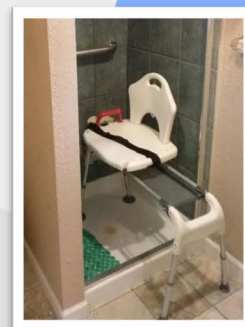
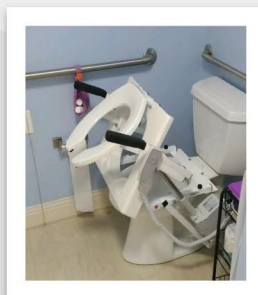


**ACCESSIBLE  
SYSTEMS**

[www.AccessibleMed.com](http://www.AccessibleMed.com)



*Ceiling Lifts overcome bathroom barriers. They lift safely and effortlessly*



*Countless Options: Toilevator, SuperPole, Toilet Incline Lift, Sliding Bath Bench, and PT Rails*