

# PERSONAL LIFTS



A. Body Support



B. Universal Sling



C. Bathing Sling



D. Hygiene Sling



E. Comfort Sling



G. Amputee Sling



F. Bath Seat Sling



H. Walking Harness

## Types of Slings

### A. Body Support

- Independent use alternative to Slings.
- Requires head and neck strength
- Automatically sizes to each person.
- Ideal for transferring
- Nothing under the hips
- Many sizes available.

### B. Universal Sling

- Support the Body with solid fabric, Mesh or Daylite Fabric
- Use any spreader bar
- With or without head support
- Cutout for toileting
- Padded Leg Optional

### C. Bathing Sling

- Shaped for easy use
- Leaves Hips Open for easy transfers
- PVC construction - waterproof and stainproof
- Easy to wipe dry
- Option velcro belt

### D. Hygiene Sling

- Designed with the bottom and lower back open
- Perfect for toileting and changing clothes
- Velcro belt available for additional support

### E. Comfort Sling

- Full Body Support for Comfort
- Easy for Caregiver to position
- Secure straps can be adjusted for positioning
- Mesh or Padded options
- Head Support
- Handles on 3 sides make each transfer easy.

### F. Amputee Sling

- Supports the body
- Solid Fabric, Mesh or Daylite Fabric
- Use with any spreader bar
- With or without head support
- Cut out space for toileting
- Padded Leg Optional

### G. Bath Seat Sling

- Shaped for easy use
- Leaves hips open for easy transfers
- PVC construction—waterproof and stainproof
- Easy to wipe dry
- Optional velcro belt

### H. Walking Harness

- Full Body for Comfort
- Easy for Caregiver
- Secure straps can be adjusted for positioning
- Mesh or padded options
- Head Support
- Handles on 3 sides make for each transfer



## Hoyer Lift

- Rolls along the floor/under bed
- Requires a caregiver to operate
- 400 lbs capacity
- Does not work with bathtub/shower/toilet
- Difficult in small spaces
- Hydraulic or Electric Operation
- Excellent for Bed to Chair Transfers on a temporary basis
- Sit to Stand option available



## Wall Lift

- Mounts to Wall or Pole
- Can be Operated Independently
- 320 lbs capacity
- Works in a Bathroom/Bedroom
- Extension available to reach any spot within a semi circle
- Can be moved from Mount to Mount (room to room)
- Electric Operation
- Excellent for all transfers



## Independent Ceiling Lift (Overhead Lift)

- 2 motors in one lift - One to lift up and down and Second motor for lateral movement along the track.
- Can be operated independently
- 440 lbs capacity
- Several Remote Control Options
- Travels anywhere with curve and straight rail combinations
- Battery Powered Operated



## Portable Ceiling Lift (Overhead Lift)

- Can be moved from track to track, room to room
- Requires a caregiver to operate
- 400lbs capacity
- Battery Powered Operation
- Inexpensive to have one portable motor and several tracks
- Travels easily along the rail.



## Ceiling Lift (Overhead Lift)

- Mounts to Ceiling and self supporting - saving floor space
- Can be operated independently
- 440 lbs capacity
- Travels over bed, chair, tub/shower, toilet, hot tub, ect.
- Easy to Use for everyone
- Battery Powered Operation.



## Rail Options (Overhead Lift)

- Eliminate Transfers - travel room to room with rail options
- Switches allow the user to travel from one rail to 2 rails for multiple transfer location
- Turntable allows the user to travel from one rail to 3 different rails for multiple transfer locations
- Travel Thru Doorways

# OVERHEAD CEILING LIFTS



## Overhead Lift

Manual lifting is soon a thing of the past. Today's market boasts a variety of patient lifts ranging from your standard patient floor lift to an overhead ceiling hoist system which can span your entire home.

A standard patient floor lift can be manual or automatic. It is generally handled by the caregiver who rolls it around the home and transfers patient between bed, wheelchair and bathroom areas. The Hoyer lift is the most common lift you'll find as it is most affordable and there is no construction required for use. Some of the downfalls of a Hoyer include its limited ability to lift and maneuver in tight spaces and its difficulty to move throughout the home (especially on carpeted floors).

In comparison, an overhead ceiling hoist system truly makes "lift and transfer" a breeze. Transferring a patient from bed to wheelchair is no longer a chore but instead a simple task. Ease of use while maintaining patient dignity and privacy are only a few of the benefits an overhead ceiling lift has to offer. Although they do come at a slightly higher price (depending on make, model and configuration) you will find that for patients with disabilities and their caregivers this tool may make all the difference.

Overhead lifts can be operated by the patient alone or with the help of a caregiver. They take up no floor space and are very simple to operate. Use of an overhead lift eliminates the back breaking work most caregivers endure.

Overhead lifts are tailored to fit the patient as well as the home they live in. The process begins with a free home evaluation performed by one of Accessible Systems's skilled consultants. The evaluation includes a complete measure of the area in question as well as an interview with patient and their caregivers to go over functions of daily living, barriers in their home, safety precautions and health concerns. This interview and measure will serve as a basis for the configuration of the lift and ultimately the proposal Accessible Systems will provide. The proposal will be itemized and will give you an idea of what it will look like and how it will operate. Your Accessible Systems consultant will then schedule a follow up meeting to discuss the proposal and plans for installation.

You have several different options when choosing the right overhead lift for you.

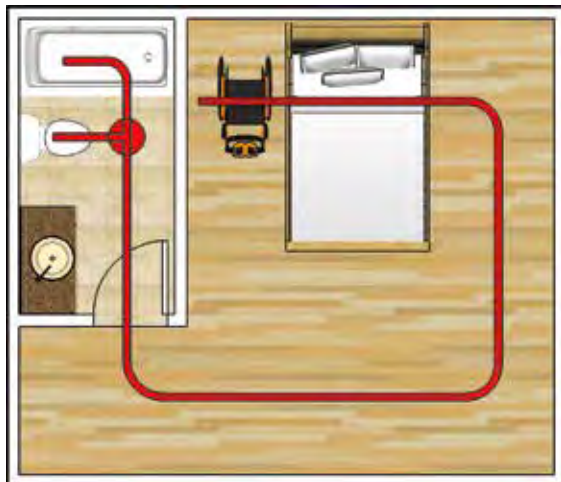
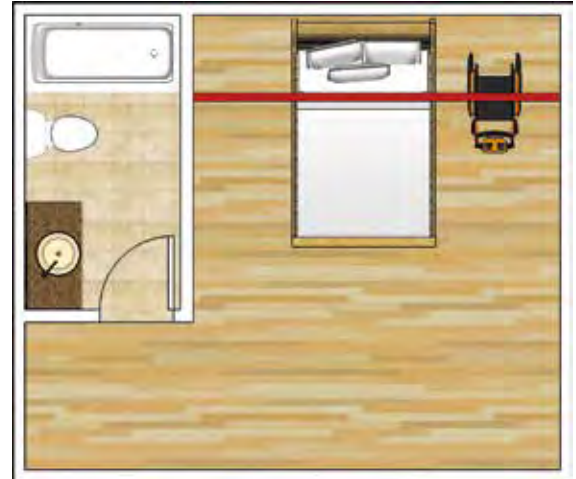






## Single Track System

The single track system is your most basic and affordable option. Its main purpose is to allow the user easy transfer between their bed, wheelchair, sitting chair or commode. The track will be installed over the bed but will also extend several feet on one end where the patient's wheelchair/chair/commode sits. This option takes one to two days of installation and will work well if you're looking for a minimal amount of coverage. Once installed the track becomes a permanent fixture and the bed and other furniture in the room can no longer be moved around. Pricing for such system will vary depending on length, installation and make + model choice. An Accessible Systems representative will be happy to perform an evaluation to see if the single track system option is right for you.



## Multi-Room System

The multi-room system is unique as it may ultimately allow a patient access throughout their entire home. This system can be fully automatic meaning the patient can access the lift on their own without help from a caregiver. This motorized system can lift a patient and move them from one room to another with the press of a button. It even has the capability to switch directions with automatic turn tables. This type of independence can be life-changing for both patient and caregiver alike. The tracks in this case are positioned throughout each affected room and are fully customized based on the patient's routine and the layout of one's home. The possibilities are endless with the multi-room system. Once installed the tracks become permanent fixtures and it may no longer be possible to move furniture around one's home. Installation can take up to 10 business days to complete but will vary by size of project. Pricing will also vary on size of each affected room, length of each track, installation time and make + model choice. An Accessible Systems representative will be happy to perform an evaluation to determine if the multi-room system is right for you.

# Share It Forward: Please Help Others Discover Accessibility

How hard was it for you to find Accessible Systems and your accessible home options? Most of our customers have a very difficult time finding accessible solutions for their home.

- Will you help your friends and family discover accessible options for their home?
- Will you share it forward to the people you know so they learn about their options to remain in the home they love?
- Will you share it forward by showing your home to your friends/visitors and in social media?

You will help others maintain their independence and freedom, prevent falls and injuries, and plan ahead to enjoy their home forever. Please give away this catalog or go to [www.shareitforward.info](http://www.shareitforward.info) to order a FREE catalog and help someone else.



Visit: [www.shareitforward.info](http://www.shareitforward.info)

## Free Home Evaluation and Design Consultation



Invite us to your home and receive a free evaluation and guide to making your home accessible. Our team is certified and experienced with many options to show you. We will evaluate your entrances, living areas, bathrooms, bedrooms, and levels in your home and provide a customized plan that includes a hassle free pricing. **Call us at 888-276-4436**

## Locations



### Denver, Colorado – Showhome

3025 West Jefferson Ave.  
Englewood, CO 80110  
Phone: 303.693.7787

### Northern CO & WY

2725 11th Street Rd.  
Greeley, CO 80634  
Phone: 970.475.1880

### Colorado Springs, CO

1880 Office Club Pointe  
Colorado Springs, CO 80920  
Phone: 719.387.0675

### Utah

669 N 1000 W,  
Centerville, UT 84014  
Phone: (801) 721-1614

### Dallas, TX

2131 N. Collins St  
Suite 433-628  
Arlington, TX 76011  
Phone: 972.408.3335

Website: [www.accessiblemed.com](http://www.accessiblemed.com) | (888) 276-4436

