

Quiet and Compact

With a weight capacity of 300 lbs, the Bruno Elan is the ideal stairlift for today and tomorrow. Rack and pinion drive delivers a ride that is smooth and quiet, while a handsome rail hides all mechanical components. In addition, the seat, armrests and footrest all fold up into a compact unit – family and friends will have no problem using the stairs.

Safety First

A dual braking system makes the Bruno Elan one of the safest stairlifts in the world. The electromagnetic braking system is complemented by a self-locking gear box and overspeed brake which completely ensures your safety. Safety sensors on the foot plate and carriage stop the unit whenever an obstruction is encountered.

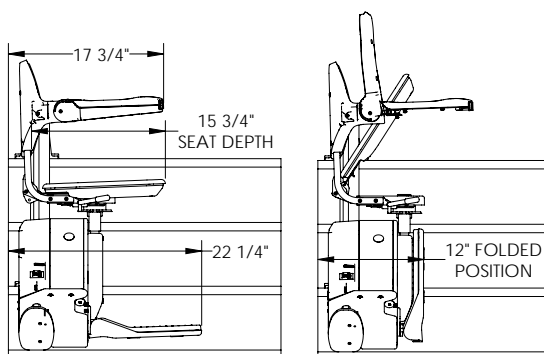
Value

Bruno Elan offers a long list of standard features that are usually found only on more expensive units. The simplicity in design makes the Bruno Elan easier and less costly to install than other stairlifts.

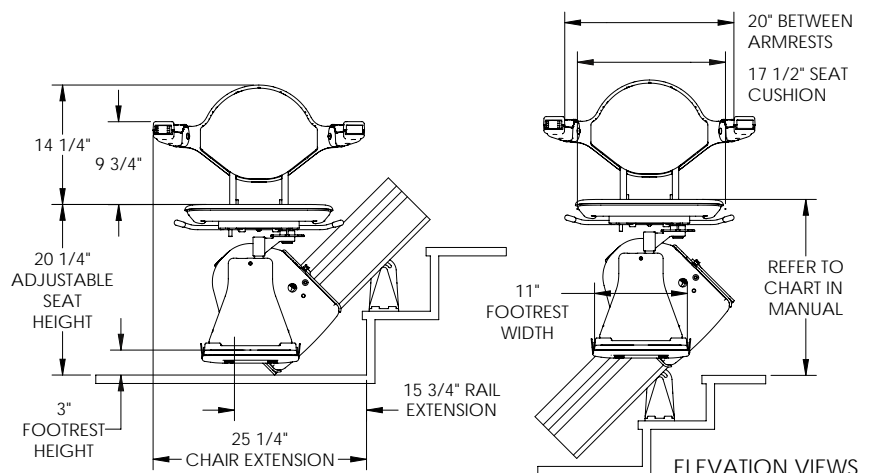
The arms, seat and footrest flip up, creating plenty of space to walk up the stairs.

Consistent Power

The Bruno Elan uses two 12-volt batteries that are powered by a low-profile charger that plugs into any household outlet. A continuous charge along the rail is provided through a full-length charge strip. Access to upstairs and downstairs is never an issue, even when there is a power outage.



DIMENSIONS ARE BASED ON 4-1/2" RAIL TO WALL POSITION
SIDE VIEWS





Features

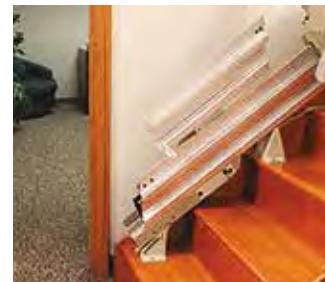
- The convenient offset swivel seat mechanism provides a safe, comfortable exit at the top of the rail
- Continuous charge strips along the entire rail mean the unit will be charged wherever it stops on the staircase
- The vertical straight rail can be installed to within 5" of the wall, and when the armrests, seat and footrest are folded, the Bruno Elan carriage takes up only 12"
- The two wireless call/send controls make installation simple and clean with no wires running along the wall



Accommodates
riders up to
300lb



Options



Folding Rails

Manual or power folding rails - if you have a narrow hallway or doorway at the bottom of your stairs, the optional folding rail is the ideal solution. The folding rail can be ordered for feather-light manual operation or push button automatic operation.



Power Swivel Seat

For a confident and easy exit at the top landing, the Bruno Elan offers an optional power swivel action. Controlled by the up/down rocker switch or by the call/send transmitters, the seat can turn up to 90° with a steady fluid movement. The rider will exit with improved stability and minimum effort.



Power Folding Footrest

For your convenience the footrest can be automated. When the seat is raised the footrest will automatically flip up. When the seat is lowered the footrest will automatically flip down. This simple and efficient feature will help people with back issues or other mobility challenges.



Safety First

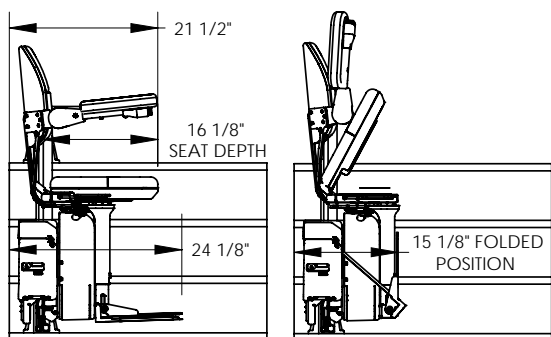
With a weight capacity of 400 lbs, and sensors that detect any obstacles on the stairs, the Bruno Elite moves up and down your staircase with power and efficiency. The offset swivel seat makes the entry and exit position at the top landing safer and easier than ever.

Reliable

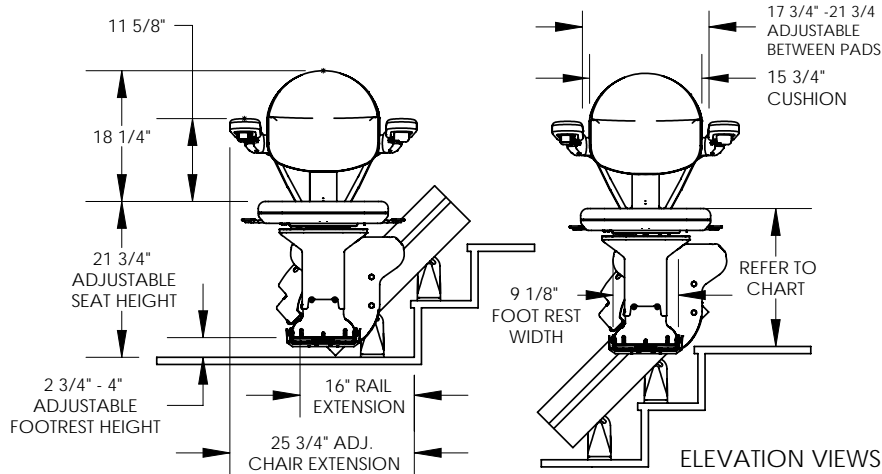
The Bruno Elite is equipped with two 12-volt batteries powered by a small charger that plugs into a standard outlet. Even during a temporary power outage you will enjoy uninterrupted performance from your stairlift.

Features

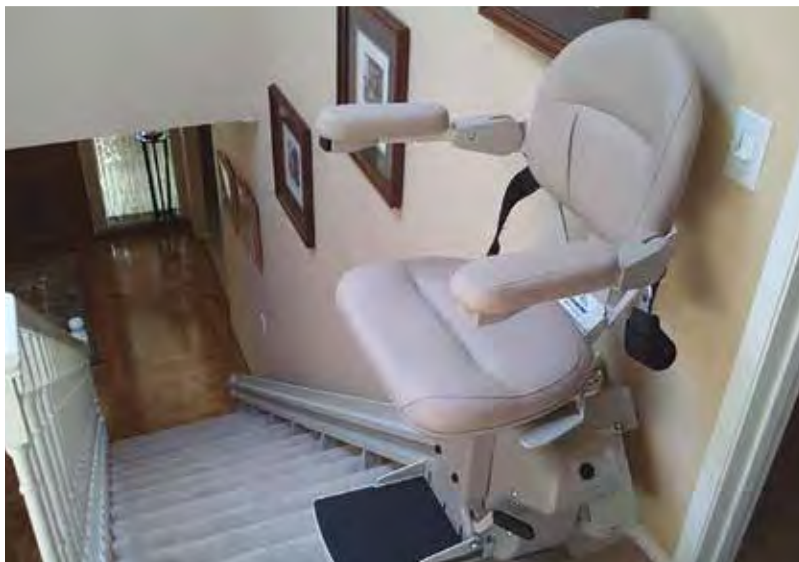
- The offset swivel seat makes the entry and exit position at the top landing easy and safe
- Safety sensors on the footrest and carriage will safely stop you if you encounter the slightest obstacle
- Continuous charge strips along the entire rail mean the unit will be charged wherever it stops on the staircase
- The two wireless call/send controls make installation simple and clean with no wires running along the wall



SIDE VIEWS



ELEVATION VIEWS



Optional Choices

Larger Seat Option

Measuring 21.5" (546 mm) in width between the armrests, the larger seat option also features additional seat depth for added comfort and complete support.

- **Standard seat pad** 17.5" (445 mm) wide x 15" (381 mm) deep
- **Larger seat pad** 21.5" (546 mm) wide x 16" (406 mm) deep

Larger Footrest Option

If an occupant is taller than average or has difficulty bending their knees, the additional 2" (51 mm) in length and width can make all the difference in the world.

- **Standard footrest size** 10" (254 mm) long x 9" (229 mm) wide
- **Larger footrest size** 12" (305 mm) long x 11" (279 mm) wide

Upholstery Selections

Comes in the original Tan Standard Vinyl or your choice of the following 9 colors:

Brown Deluxe	Dark Brown Deluxe	Burgundy Leather	Maroon Vinyl	Olive Vinyl
Grey Deluxe	Burgundy Deluxe	Charcoal Vinyl	Light Brown Vinyl	Tan Standard Vinyl



Accommodates
riders up to
400lb

Power Swivel Seat

For a confident and easy exit at the top landing, the Bruno Elite offers an optional power swivel action. Controlled by the up/down rocker switch or by the call/send transmitters, the seat can turn up to 90° with a steady, fluid movement. The rider will exit with improved stability and minimum effort.

Manual or Power Folding Rails

If you have a narrow hallway or doorway at the bottom of your stairs, the optional folding rail is the ideal solution. The folding rail can be ordered for feather-light manual operation or push button automatic power operation. A third charging station allows you to charge the unit when the rail is folded.

Power Folding Footrest

For your convenience the foot rest can be automated. When the seat is raised the footrest will automatically flip up. When the seat is lowered the footrest will automatically flip down. This simple and efficient feature will help people with back issues or other mobility challenges.



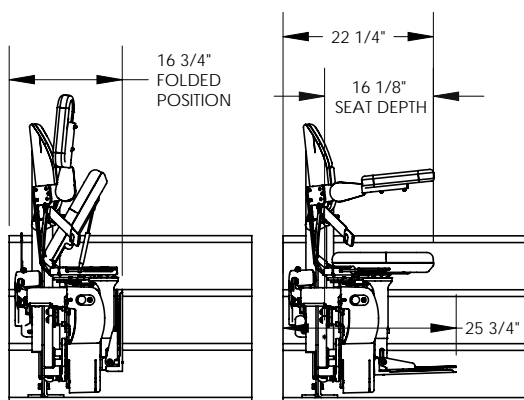
Curved Stairlifts Custom Made for You

Imagine a custom stairlift made to the exact specifications of your stairway. That is what Accessible Systems does better than any installer. Our custom curved stairlifts give you back access to your home. They are attractively designed with you in mind.

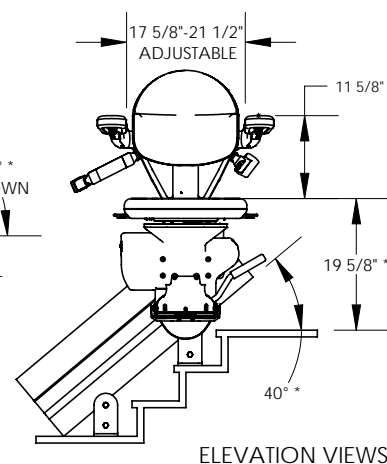
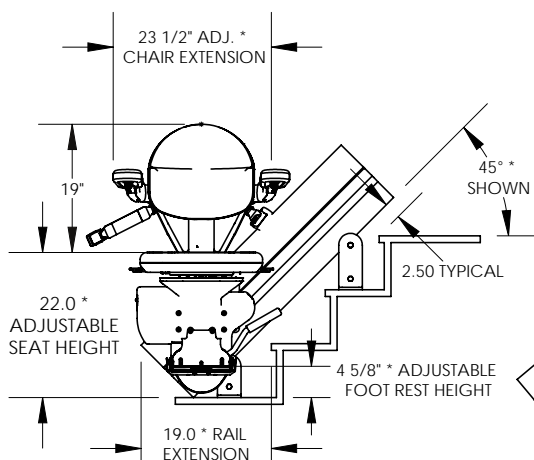
With a safe and durable design, Bruno's Elite Curve can be installed on almost all stairways. Custom made and installed in just a few weeks, the graceful, elegant Bruno Elite Curve retains the beauty of your home while extending your independence throughout.

Features

- 400 lbs weight capacity
- Direct drive motor/gear box – no belts for reduced maintenance
- Remarkable stable ride from top to bottom
- The vertical rail design allows family members ample space on the staircase
- Visual diagnostics for instant unit status
- Two 12-volt batteries – continuously powered from any household outlet – provide dependable performance, even during outages
- Arms, seat and footrest flip up creating plenty of space for family or guests to walk up and down the stairs
- Generous seat size with adjustable width armrests and multiple seat heights
- An offset swivel seat, making the entry and exit position at the top landing safe and easy



DIMENSIONS ARE BASED ON 7.5" RAIL TO WALL POSITION
SIDE VIEWS



ELEVATION VIEWS



Optional Choices

Larger Seat Option

Measuring 21.5" (546 mm) in width between the armrests, the larger seat option also features additional seat depth for added comfort and complete support.

- **Standard seat pad** 17.5" (445 mm) wide x 15" (381 mm) deep
- **Larger seat pad** 21.5" (546 mm) wide x 16" (406 mm) deep

Larger Footrest Option

If an occupant is taller than average or has difficulty bending their knees, the additional 2" (51 mm) in length and width can make all the difference in the world.

- **Standard footrest size** 10" (254 mm) long x 9" (229 mm) wide
- **Larger footrest size** 12" (305 mm) long x 11" (279 mm) wide

Upholstery Selections

See page 25 for color swatches



**Accommodates
riders up to
400lb**

Power Swivel Seat

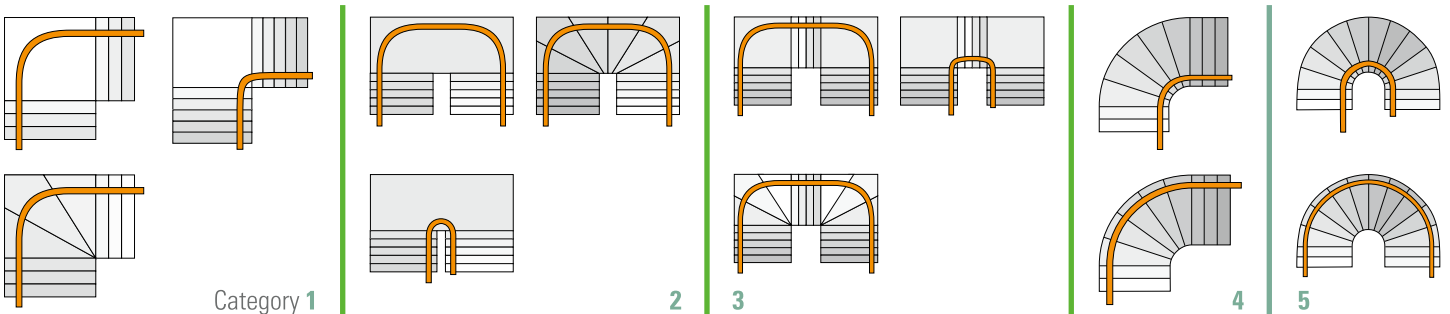
For a confident and easy exit at the top landing, the Bruno Elite Curve offers an optional power swivel action. Controlled by the up/down rocker switch or by the call/send transmitters, the seat can turn up to 90° with a steady, fluid movement. The rider exits with a minimum of effort and improved stability.

Power Folding Footrest

For added convenience in folding the footrest, this option will be greatly appreciated. Now, the footrest can automatically flip up when the seat is raised, and flip down when the seat is lowered. It's simple, efficient and a great help for individuals with back problems or other mobility challenges.

Mid Park and Charge

For those staircases that have a landing between the top and bottom, the Bruno Elite Curve offers an optional park position with a charging station. Exit at the landing (fold up the arms, seat and footrest) and your stairlift will be charging and ready for use when you return to go up or down.



BRUNO OUTDOOR ELITE



Access to the Great Outdoors!

Access to your home from an exterior staircase is no longer a problem. The Bruno Outdoor Elite is now the leading outdoor stairlift. This remarkable stairlift provides you with the quality, comfort, and dependability you desire. The standard options on this attractive stairlift will surprise and please you.

Built in Wisconsin and tested in all types of weather, the Outdoor Elite is reliable, safe, durable and designed to withstand the elements. An outdoor stairlift of this quality allows you to navigate the stairs outside your home with confidence and ease – any time of year!

With innumerable uses – from your front door to the sidewalk or your cabin door to the boathouse – this outdoor stairlift offers unique mobility. Only a home stairlift designed like this one can extend your independence safely and securely outside your home. Not all chairlifts are created equally.



Features

- Specifically designed for exterior use, providing you with the same quality, comfort and convenience available in Bruno's complete line of straight rail and curved rail stairlifts
- Durable, powder coat outdoor paint that protects all steel surfaces
- Clear anodized aluminum rail
- Seat cushions made from exterior marine-grade vinyl
- Tested for use in weather temperatures ranging from 0°F to 125°F (-15°C to 52°C)
- Innovative weather resistant cover system travels with the chair and provides protection from the elements when the stairlift is not in use.
- 400 lbs weight capacity
- Direct drive motor/gear box – no belts for reduced maintenance
- Remarkable stability through the improved clamping and rail design
- A vertical, straight rail that installs to within inches from the edge of the staircase – family members and guests will have no problem using the stairs
- Visual diagnostics for instant unit status
- Two 12-volt batteries – continuously powered from any household outlet – provide dependable performance, even during power outages
- Arms, seat and footrest flip up creating plenty of space for family or guests to walk up and down the stairs
- Generous seat size with adjustable width arm rests and multiple seat heights
- An offset swivel seat makes the entry and exit position at the top landing safe and easy
- Extended rail lengths available



Superior Styling

Performance

The Outdoor Elite is specifically designed for exterior use, providing you with the same quality, comfort and convenience available with Accessible Systems's complete line of straight rail and curved rail stairlifts. Accessible Systems dependability built in!

Refinement

The Outdoor Elite represents more than a decade of research and engineering. With a honeycomb rail design for improved stability, and visual coded diagnostics to instantly analyze the unit's operational status, the Outdoor Elite is the perfect example of form and function.

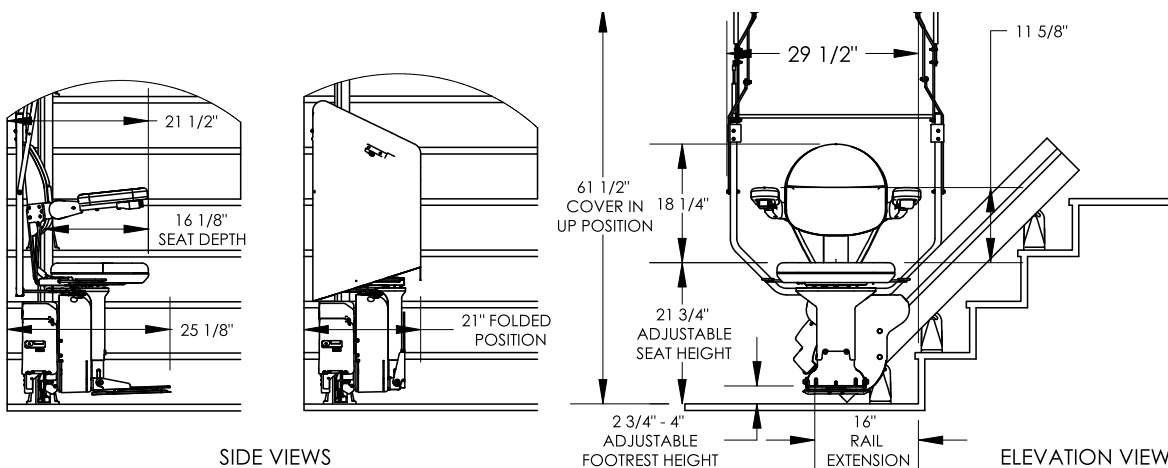
Quality Craftsmanship

Safety

With a rated weight capacity of 400 lbs (181 kg) and sensors that detect any obstacles on the stairs, the Outdoor Elite moves up and down your exterior stairs with power and efficiency. The offset swivel seat makes the entry and exit at the top landing safer and easier than ever.

Reliable

Equipped with two 12-volt batteries powered by a small, unobtrusive battery charger that requires no special electrical wiring, the Outdoor Elite provides uninterrupted performance, even during a temporary failure of electrical service to your home.



Accommodates
riders up to
400lb

BRUNO OUTDOOR ELITE CURVED



Outdoor Elite Curved Rail

The Bruno Outdoor Elite Curved rail stairlift is specifically designed for exterior use. It is custom made for you with the same care as Bruno's complete line of stairlifts.

With a rail design for improved stability, and visual coded diagnostics to instantly analyze the unit's operational status, the Outdoor Elite Curve is the perfect example of form and function.

The Outdoor Elite Curve moves up and down your exterior stairs with power and efficiency. The offset swivel seat makes the entry and exit at the top landing safer and easier than ever.



A weather-resistant cover is secured in a convenient pouch beneath the seat when cover is not being used.

Features

- Specifically designed for exterior use, providing you with the same quality, comfort and convenience available in Bruno's complete line of straight rail and curved rail stairlifts
- Durable, powder coat outdoor paint that protects all steel surfaces
- Seat cushions made from exterior marine-grade vinyl
- Tested for use in weather temperatures ranging from 0°F to 125°F (-15°C to 52°C)
- 400 lbs weight capacity
- Direct drive motor/gear box – no belts for reduced maintenance
- Remarkable stable ride from top to bottom
- Weather resistant cover provides protection from the elements when not in use and can be stored in a pouch conveniently located under the seat during operation
- Two 12-volt batteries – continuously powered from any household outlet – provide dependable performance, even during outages
- Arms, seat and footrest flip up creating plenty of space for family or guests to walk up and down the stairs
- Generous seat size with adjustable width arm rests and multiple seat heights
- An offset swivel seat makes the entry and exit position at the top landing safe and easy



Accommodates
riders up to
400lb

FINANCING AVAILABLE!

MADE IN USA



Superior Styling

Performance

The Bruno Outdoor Elite is designed to be tough but we haven't sacrificed comfort or design. This attractive stairlift will stand up to weather and carry you to your home in style.

Refinement

The Bruno Outdoor Elite Curve represents more than a decade of research and engineering. With a rail design for improved stability, and visual coded diagnostics to instantly analyze the unit's operational status, the Bruno Outdoor Elite Curve is the perfect example of form and function.

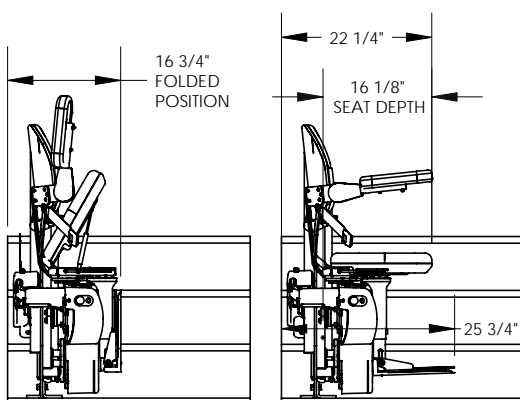
Quality Craftsmanship

Safety

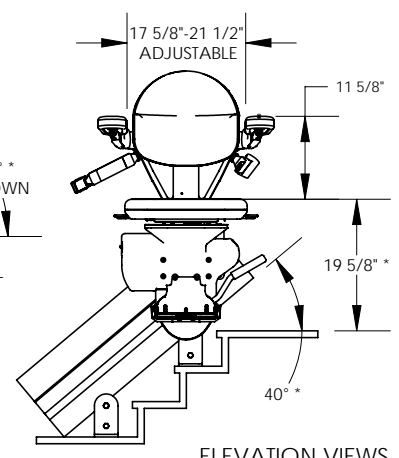
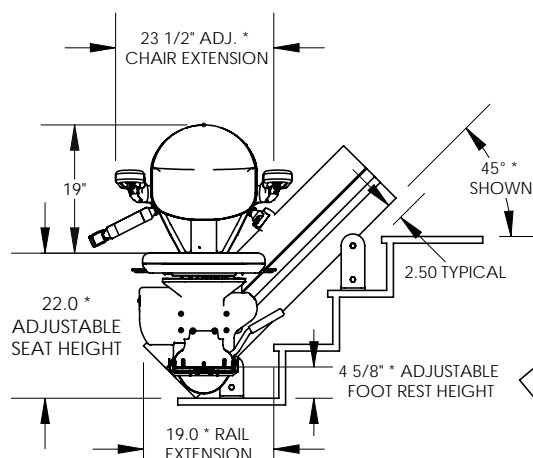
With a rated weight capacity of 400 lbs (181 kg) and sensors that detect any obstacles on the stairs, the Bruno Outdoor Elite Curve moves up and down your exterior stairs with power and efficiency. The offset swivel seat makes the entry and exit at the top landing safer and easier than ever.

Reliable

Equipped with two 12-volt batteries powered by a small, unobtrusive battery charger that requires no special electrical wiring, the Bruno Outdoor Elite provides uninterrupted performance, even during a temporary failure of electrical service to your home.



DIMENSIONS ARE BASED ON 7.5\"/>



ELEVATION VIEWS

Share It Forward: Please Help Others Discover Accessibility

How hard was it for you to find Accessible Systems and your accessible home options? Most of our customers have a very difficult time finding accessible solutions for their home.

- Will you help your friends and family discover accessible options for their home?
- Will you share it forward to the people you know so they learn about their options to remain in the home they love?
- Will you share it forward by showing your home to your friends/visitors and in social media?

You will help others maintain their independence and freedom, prevent falls and injuries, and plan ahead to enjoy their home forever. Please give away this catalog or go to www.shareitforward.info to order a FREE catalog and help someone else.



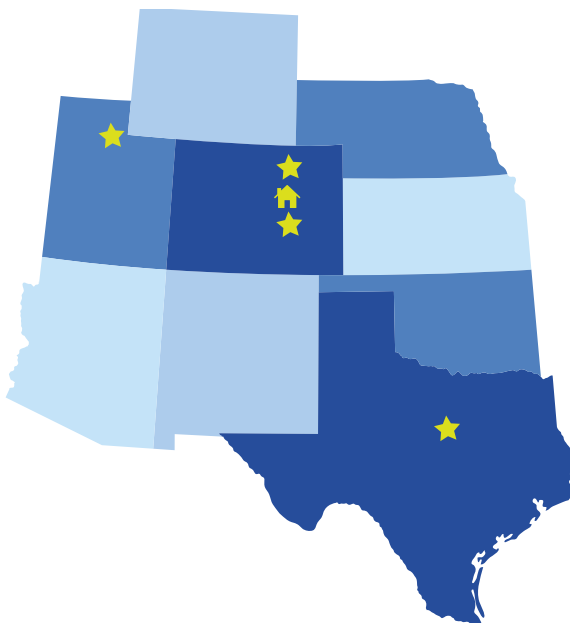
Visit: www.shareitforward.info

Free Home Evaluation and Design Consultation



Invite us to your home and receive a free evaluation and guide to making your home accessible. Our team is certified and experienced with many options to show you. We will evaluate your entrances, living areas, bathrooms, bedrooms, and levels in your home and provide a customized plan that includes a hassle free pricing. **Call us at 888-276-4436**

Locations



Denver, Colorado – Showhome

3025 West Jefferson Ave.
Englewood, CO 80110
Phone: 303.693.7787

Northern CO & WY

2725 11th Street Rd.
Greeley, CO 80634
Phone: 970.475.1880

Colorado Springs, CO

1880 Office Club Pointe
Colorado Springs, CO 80920
Phone: 719.387.0675

Utah

669 N 1000 W,
Centerville, UT 84014
Phone: (801) 721-1614

Dallas, TX

2131 N. Collins St
Suite 433-628
Arlington, TX 76011
Phone: 972.408.3335

Website: www.accessiblemed.com | (888) 276-4436

