

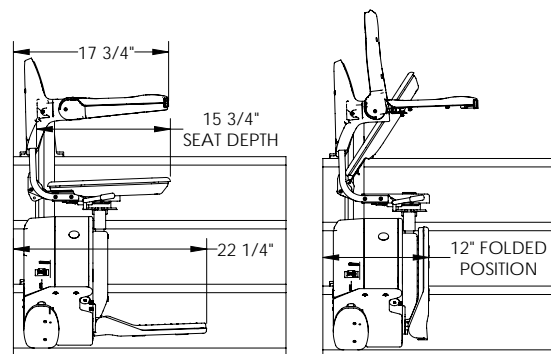
## Quiet and Compact

With a weight capacity of 300 lbs, the Bruno Elan is the ideal stairlift for today and tomorrow. Rack and pinion drive delivers a ride that is smooth and quiet, while a handsome rail hides all mechanical components. In addition, the seat, armrests and footrest all fold up into a compact unit – family and friends will have no problem using the stairs.

## Value

Bruno Elan offers a long list of standard features that are usually found only on more expensive units. The simplicity in design makes the Bruno Elan easier and less costly to install than other stairlifts.

**The arms, seat and footrest flip up, creating plenty of space to walk up the stairs.**



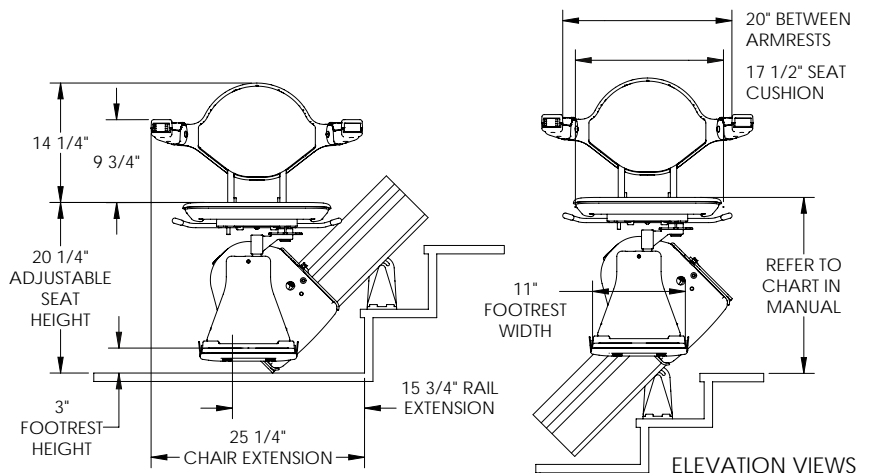
DIMENSIONS ARE BASED ON 4-1/2" RAIL TO WALL POSITION  
SIDE VIEWS

## Safety First

A dual braking system makes the Bruno Elan one of the safest stairlifts in the world. The electromagnetic braking system is complemented by a self-locking gear box and overspeed brake which completely ensures your safety. Safety sensors on the foot plate and carriage stop the unit whenever an obstruction is encountered.

## Consistent Power

The Bruno Elan uses two 12-volt batteries that are powered by a low-profile charger that plugs into any household outlet. A continuous charge along the rail is provided through a full-length charge strip. Access to upstairs and downstairs is never an issue, even when there is a power outage.





## Features

- The convenient offset swivel seat mechanism provides a safe, comfortable exit at the top of the rail
- Continuous charge strips along the entire rail mean the unit will be charged wherever it stops on the staircase
- The vertical straight rail can be installed to within 5" of the wall, and when the armrests, seat and footrest are folded, the Bruno Elan carriage takes up only 12"
- The two wireless call/send controls make installation simple and clean with no wires running along the wall



Accommodates  
riders up to  
300lb



## Options



### Folding Rails

Manual or power folding rails - if you have a narrow hallway or doorway at the bottom of your stairs, the optional folding rail is the ideal solution. The folding rail can be ordered for feather-light manual operation or push button automatic operation.



### Power Swivel Seat

For a confident and easy exit at the top landing, the Bruno Elan offers an optional power swivel action. Controlled by the up/down rocker switch or by the call/send transmitters, the seat can turn up to 90° with a steady fluid movement. The rider will exit with improved stability and minimum effort.



### Power Folding Footrest

For your convenience the footrest can be automated. When the seat is raised the footrest will automatically flip up. When the seat is lowered the footrest will automatically flip down. This simple and efficient feature will help people with back issues or other mobility challenges.

# Share It Forward: Please Help Others Discover Accessibility

How hard was it for you to find Accessible Systems and your accessible home options? Most of our customers have a very difficult time finding accessible solutions for their home.

- Will you help your friends and family discover accessible options for their home?
- Will you share it forward to the people you know so they learn about their options to remain in the home they love?
- Will you share it forward by showing your home to your friends/visitors and in social media?

You will help others maintain their independence and freedom, prevent falls and injuries, and plan ahead to enjoy their home forever. Please give away this catalog or go to [www.shareitforward.info](http://www.shareitforward.info) to order a FREE catalog and help someone else.



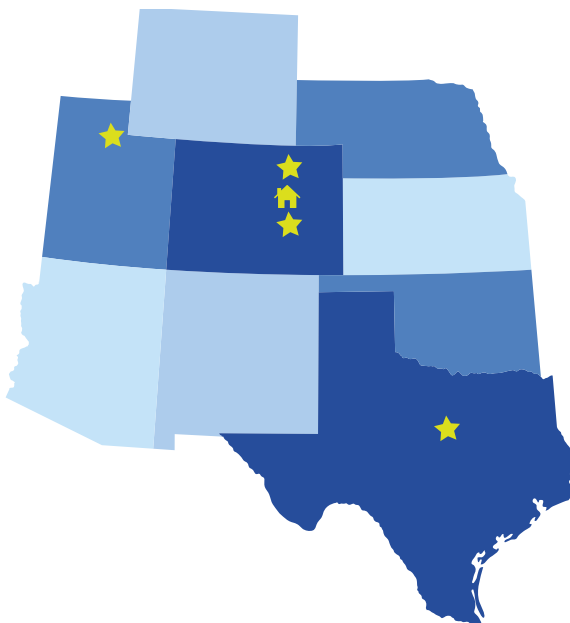
Visit: [www.shareitforward.info](http://www.shareitforward.info)

## Free Home Evaluation and Design Consultation



Invite us to your home and receive a free evaluation and guide to making your home accessible. Our team is certified and experienced with many options to show you. We will evaluate your entrances, living areas, bathrooms, bedrooms, and levels in your home and provide a customized plan that includes a hassle free pricing. **Call us at 888-276-4436**

## Locations



### Denver, Colorado – Showhome

3025 West Jefferson Ave.  
Englewood, CO 80110  
Phone: 303.693.7787

### Northern CO & WY

2725 11th Street Rd.  
Greeley, CO 80634  
Phone: 970.475.1880

### Colorado Springs, CO

1880 Office Club Pointe  
Colorado Springs, CO 80920  
Phone: 719.387.0675

### Utah

669 N 1000 W,  
Centerville, UT 84014  
Phone: (801) 721-1614

### Dallas, TX

2131 N. Collins St  
Suite 433-628  
Arlington, TX 76011  
Phone: 972.408.3335

Website: [www.accessiblemed.com](http://www.accessiblemed.com) | (888) 276-4436

