



SRE-2750 and SRE-2750FR Electra-Ride™ LT Stairway Elevator
Technical Specifications

Rev: 02/19/2009
ILS-00798

MODEL NUMBER: SRE-2750 and SRE-2750FR
U.S. F.D.A. CLASSIFICATION: Class II,
CLASSIFICATION NUMBER: 890.5150
PRODUCT CODE: ILK

PERFORMANCE STANDARDS: USA Food & Drug Administration: None
ANSI/ASME: A18.1-1999 Safety Standards for Platform Lifts and Stairway Chairlifts
ANSI/ASME: A18.1-2003 Safety Standards for Platform Lifts and Stairway Chairlifts
ANSI/ASME: A18.1-2005 Safety Standards for Platform Lifts and Stairway Chairlifts
ANSI/ASME: A18.1-2008 Safety Standards for Platform Lifts and Stairway Chairlifts
CSA C-US Listed: File Number 208135

RATED LOAD: 275 lbs maximum

NUMBER OF PASSENGERS: 1

POWER SOURCE: 24 Volt DC comprised of 2ea 7amp/hr 12 volt sealed maintenance-free lead acid batteries. On/Off power switch to prevent battery drain over lengthy storage periods.

CHARGER: 110 Volt AC 1.5 Amp, 24 Volt DC 2 Amp continuous monitoring, full primary cut off.

DRIVE: 24 Volt DC motor, 2 Pole rated .50 hp intermediate duty limited at current setting, no load speed 4230 rpm.

GEAR BOX: Direct drive double reduction gear box with 80:1 ratio – First stage 20:1 self locking worm gearing, Second stage 4:1 helical gearing.

FINAL DRIVE: Integrated 8dp gear rack on rail with spur gear on the gearbox output shaft.

MOTOR CONTROLLER: 24 Volt DC PWM controller with acceleration ramping.

BRAKING: dynamic motor braking through the motor controller and self locking worm gear box.

REMOTE CONTROL: Infra-red wireless “CALL/SEND” control. Momentary switching requires a user to continuously hold button to control unit.

STANDARD CONTROL: 3 position, momentary rocker switch requiring user to continuously hold rocker switch to control unit, switch mounted under arm rest.

MOUNT: Either side of stairway, the unit is easily installed on either side of the staircase.

SUPPORTS: Clamps anchored to stair tread, normal rail position is 1 3/4" above step nose. Number of clamps dependent on the length of rail. Optional height adjustable clamps available.

ANGLE: Adjustable from 0 to 45 degrees standard, specials to 50 degrees.

SPEED: Maximum of 32 feet per minute unloaded, actual loaded top speed 18 to 23 feet per minute.

LENGTH OF TRACK: 16 foot & 20 foot standard, Dealer to cut to fit the actual length of the stair, see application guide.

TRACK CONSTRUCTION: Aluminum extruded rail with covered steel gear rack. Bolted joint plate at each rail joint.

OPTIONAL FOLDING TRACK: Optional rail with manually actuated hinge system to fold rail away from restricted access ways at the lower landing of the staircase.

FOOTREST: Folding footrest with safety sensor panel.

SEAT: Padded, folding & swivels 67 degrees top and bottom standard. Swivel adjustable to 90 degrees top and bottom. Four position seat height adjustment.

ARM RESTS: Arms are fixed to the seat frame. Armrest individually flip back for smaller profile when not in use and for easier wheelchair transfers.

SAFETY EQUIPMENT: 1) Seat swivel switch allows operation only when chair is center position.
2) Footrest safety switches
3) Seat belt
4) Carriage safety switches
5) 25 amp manual reset breaker on the motor control circuit
6) Final end stop bumper at each end of the rail
7) Final limit switch
8) Full diagnostic interconnect circuit board

POWER OUTAGE: Unit will have 8 (minimum) to 15 round trips on battery charge (variance caused by angle, length of run, ambient temperature and rider weight). Batteries will last between 28 and 36 hours after the power is disconnected.

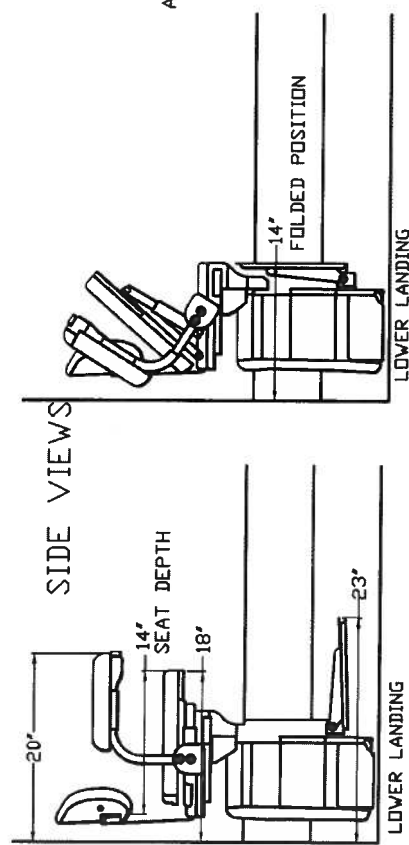
WEIGHT OF UNIT: 210LBS. without rider in a typical 16 foot installation

TESTING PERFORMED:

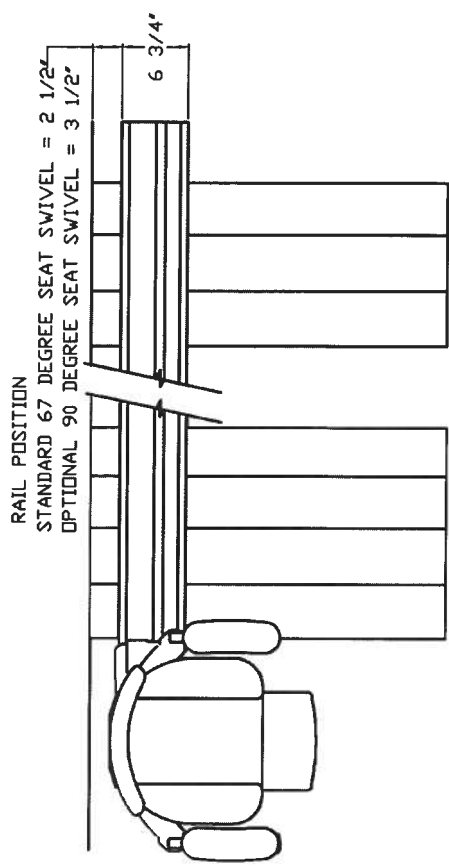
- 1) Life cycle of 10,000+ cycles with full rated load at 45 degrees on a 16' rail. Gearbox, rail, and components had minimal wear. Estimated yearly heavy use is 1200 cycles. This test performed at manufacturer's location.
- 2) The self locking gear box was statically tested with 2,200 lbs (8X rated load) on a 45 degree rail for 5 minutes with no carriage movement. This test was performed at the manufacturer's location.
- 3) Repetitive tests were run to determine power outage cycling.
- 4) Electrical discharge to ground testing performed for FDA 510(k).

TECHNICAL DATA/SPECIFICATIONS

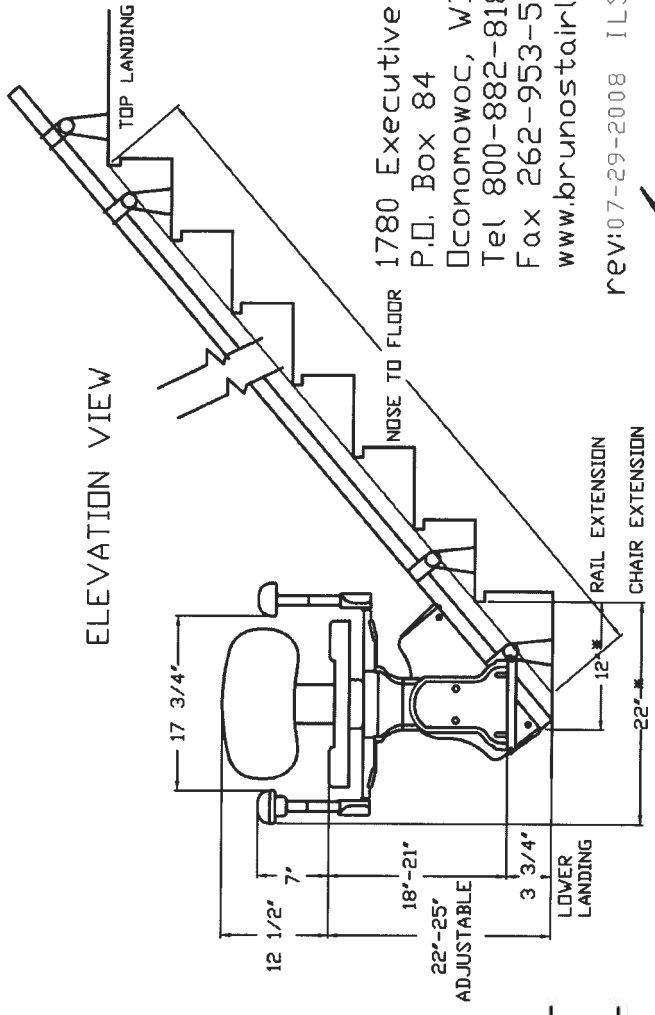
MODEL: SRE-2750 Electra Ride LT
 RATED LOAD: 275 LBS, ONE PASSENGER
 POWER SOURCE: 24 VOLT DC COMPRISED OF (2) 7 AMP/HR 12 VOLT SEALED BATTERIES.
 100-240 Volt AC, 50/60 Hz, 0.85 Amp Power Supply Input
 33 Volt DC 1 amp transformer output, 29.6 to 27.6 Volt DC charging at 850mA max, continuous monitoring.
 DRIVE: 24 VOLT DC MOTOR, 2 POLE RATED .50 HP
 INTERMEDIATE DUTY NO LOAD SPEED OF 4230 RPM.
 DIRECT DRIVE DOUBLE REDUCTION GEARBOX 80:1 RATIO
 FIRST STAGE 20:1 SELF LOCKING WORM GEARING
 SECOND STAGE 4:1 HELICAL GEARING.
 FINAL DRIVE: RACK & PINION - INTEGRATED 8dp GEAR RACK ON RAIL WITH SPUR GEAR ON THE GEARBOX OUTPUT SHAFT.
 BRAKING: DYNAMIC MOTOR BRAKING THROUGH THE MOTOR CONTROLLER AND SELF LOCKING WORM GEAR.
 CONTROLS: CONTINUOUS PRESSURE ROCKER SWITCH LOCATED ON ARMREST AND WALL MOUNTED CALL/SEND CONTROLS LOCATED AT BOTH TOP & BOTTOM LANDINGS.
 ANGLES: 0 TO 45 DEGREES (Specials up to 50 Degrees)
 SPEED: 32 FEET PER MINUTE UNLOADED
 18-23 FEET PER MINUTE WITH RATED LOAD
 FINAL LIMIT SWITCH STANDARD



SHEET 1 OF 2 DIMENSIONS BASED ON 2 1/2' RAIL POSITION



TOP VIEW



ELEVATION VIEW

* LOWER LANDING EXTENSION DIMENSIONS ARE BASED ON 40 DEGREE RAIL SLOPE AND 8" 1ST RISER HEIGHT, DIMENSIONS WILL VARY BASED ON SLOPE AND RISER HEIGHT.

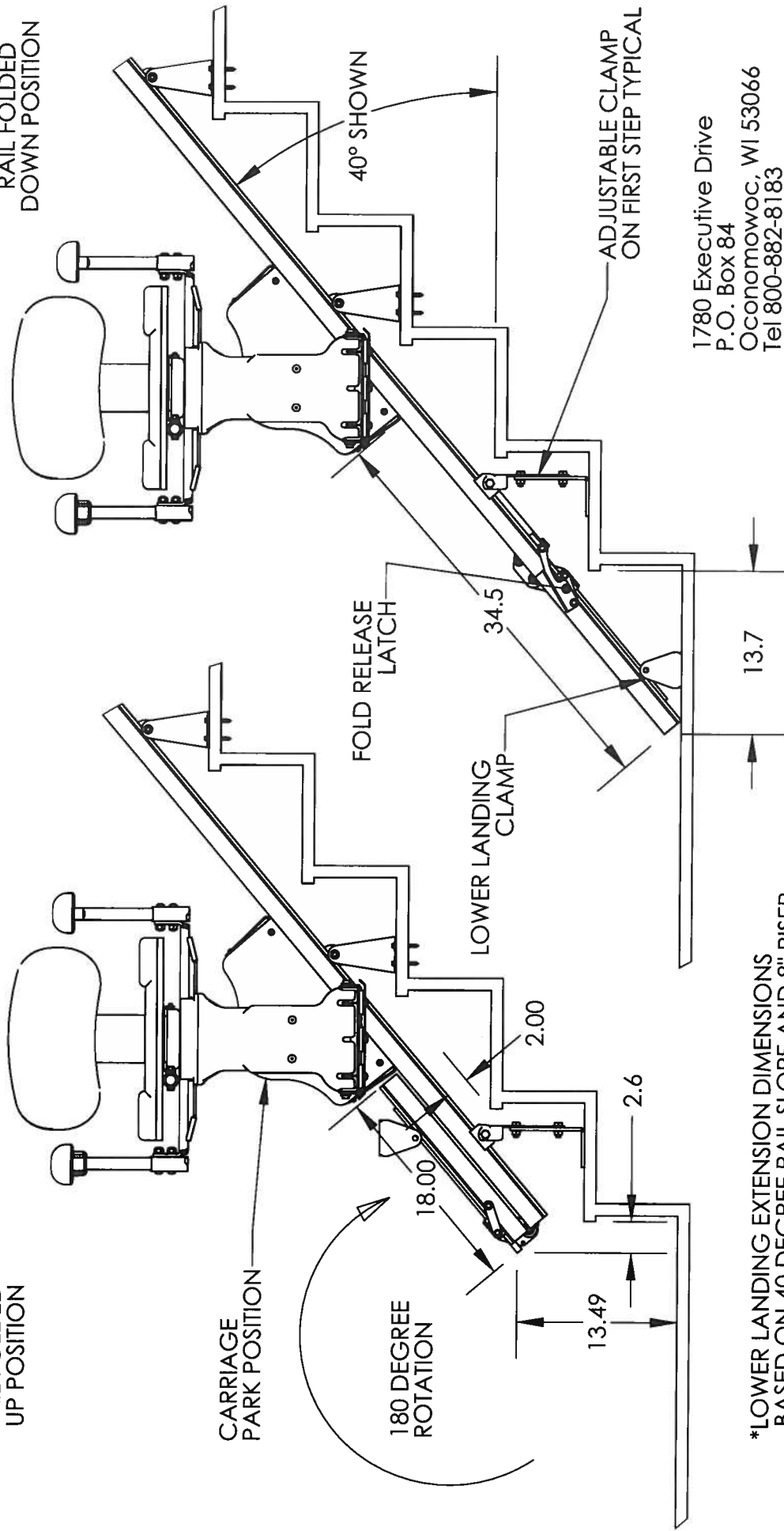
1780 Executive Drive
 P.O. Box 84
 Oconomowoc, WI 53066
 Tel 800-882-8183
 Fax 262-953-5501
 www.brunostairlifts.com
 rev: 07-29-2008 ILS-00798



SRE-2750FR - FOLDING RAIL

AUXILIARY
ELEVATION VIEW
RAIL FOLDED
UP POSITION

AUXILIARY
ELEVATION VIEW
RAIL FOLDED
DOWN POSITION



*LOWER LANDING EXTENSION DIMENSIONS
BASED ON 40 DEGREE RAIL SLOPE AND 8" RISER
HEIGHT. DIMENSION WILL VARY BASED ON SLOPE
AND RISER HEIGHT.

1780 Executive Drive
P.O. Box 84
Oconomowoc, WI 53066
Tel 800-882-8183
Fax 262-953-5501
www.brunostairlifts.com
rev: 7/29/08 ILS-00798